

## Read your dues form carefully!

The NODA Central Office expects to bill Year 2002 dues renewal forms before **NOVEMBER 30**. This will give our members more time to pay their dues prior to the January 1 deadline. If you do not receive your form by **December 15**, call the Central Office and another form will be sent to you.

When you receive your form, please read through your personal information carefully, and make any necessary changes to assure an accurate listing in the next roster and the NODA website.

Pay particular attention to the "Mandatory Disclosures" on the reverse side of the form and take a copy of both front and back for your records and future tax preparation.

Remember the Federal Government has

---

**If you do not receive your (dues) form by Dec. 15, call the Central Office and another form will be sent to you.**

---

imposed stringent control and reporting requirements with regard to all "PAC" contributions. For example:

- 1) You are prohibited from including your PAC contribution in your dues payment. Federal law requires a separate, personal check be issued made

payable to "PAC."

- 2) By federal law, NODA and the LDA are required to report and transfer PAC contributions within ten days of receipt.

If further information is needed, please call either Mona Whittington or Alice Corkern in the NODA Central Office at 834-6449 or leave a voice mail message and your call will be returned.

Another note from the Central Office: The revisions to the NODA By-laws approved at the September 5 general meeting have been incorporated in the original NODA By-laws and copies are available for any member desiring one.

Call Mona or Alice in the NODA Central Office for your copy.

N E W O R L E A N S D E N T A L A S S O C I A T I O N

# NODA News

## MISSION STATEMENT

To establish and maintain a cohesive organization that serves its membership by promoting the art, science, and professionalism of dentistry, and by communicating the value of oral health to the community.

VOL. 39 NOVEMBER '01 NO. 9

## NOVEMBER 14 MEETING

### *Dr. Armbruster on Essix Appliance*

Nominations for a number of 2002 officers and a CE lecture by Dr. Paul Armbruster of the LSUSD orthodontics faculty are the features of the Wednesday, November 14 NODA general membership meeting at 7 p.m. in the dental school's Auditorium A.

Dr. Armbruster will speak on "Intrusion of Supra-Erupted Teeth Using an Essix Appliance."

The Nominations Committee headed by Dr. Tom Giacona, president-elect, will make its report to the membership. Other nominations may be made from the general membership by submission in writing with two NODA members' signatures to the Secretary prior to the start of the meeting.

Open offices for 2002 are: Vice-President, 2nd Vice-President, Treasurer, NODA Board of Governors, NODA's LDA Board Member, NODA's Nominee to the LDA for Delegate to the ADA and NODA's Nominee to the LDA for Alternate Delegate to the ADA.

There will be refreshments following the meeting and the drawing for a \$50 dues rebate. Tickets are retained for the grand drawing for a full year's dues rebate in May.



DR. ARMBRUSTER

### *Nominations asked for NODA awards*

December 1 is the deadline for submission of nominations for the NORD Honor Dentist Award and the Victor B. Marquer Award for non-dentists.

The Honor Dentist Award is in recognition of outstanding contributions and exemplary conduct in the profession of dentistry by a member of NODA. Last year's honoree was Dr. E.J. Ganuchau, Jr.

The Victor B. Marquer Award is in recognition of distinguished and dedicated service to NODA by a non-dentist. Last year's recipient was Ms. Marie Bordenave of the Greater New Orleans Tourist and Convention Commission.

Send nominations and your reason for the recommendation(s) to Dr. Guy J. Ribando and Dr. Jim Roethle, Co-chairmen, Honors and Awards Committee, NODA, 2121 N. Causeway Blvd., Suite 153, Metairie, LA.

**NODA MEMBER HEADS NATIONAL BODY, PAGE 5**

## President's Message

by CAROL A. STUCKEY, DDS

### LET US TOGETHER SET A GREAT EXAMPLE

Dr. Carl Bilancione, a dentist from Winter Springs, Florida, is vying for this season's "Survivor" series' coveted one million dollar prize. Across the world many people will be watching Dr. Bilancione do his best to fight for survival in the African wilderness along with other contenders.

Even if we have not followed this series, as dentists watching one of our own put to the test, piques our curiosity. In our heart of hearts we are hoping he sets a great example of courage, knowledge, practical skills, and interpersonal skills to make us all proud.

It is not so much the win we are after here as it is to see a great example set for the world and us by one of our own.

Yet it seems there is a parallel here happening to all of us. While Dr. Bilancione is in the African wilderness fighting for survival, as a nation we are doing the same thing. Instead of lions and tigers, however, our predators are terrorists, who have proven to be quite lethal.

It is as though we too have been thrust into a dark continent with unknown enemies who may strike at any time. Now we must draw on all of our courage, knowledge, instincts, practical skills, and interpersonal skills (as individuals

and as organizations) to defeat the enemy. Our very survival as a nation depends on it.

We are seeing great examples set before us. All of the United States is responding to the events of September 11 with an overwhelming outpouring of donations. Louisiana, a poor state with one of the lowest per capita incomes, is one of the highest in charitable giving. This was before the terrorists' strike in September.

Many local dentists have volunteered their services to help in New York. Many others have donated blood and contributed to the Red Cross. As explained in this issue of *NODA News*, a dentist from the Baton Rouge component, Dr. Thomas Witherspoon has laid down the challenge to each Louisiana dentist to give 100 dollars to help raise funds to purchase a fire truck for the New York Fire Department.

I applaud Dr. Witherspoon for this effort. I will personally donate to this effort and I challenge all NODA dentists to do the same.

Our individual efforts have an impact. Our collective efforts have an even greater impact. Let us together set a great example.

The great example is the win.

Dr. Bilancione, we wish you well.

Carol Stuckey, DDS  
President

### DENTISTS ISSUED FIRE TRUCK CHALLENGE

Dr. Thomas F. Witherspoon challenges all dentists to match his contribution of \$100 toward the purchase of the fire truck. "The Spirit of Louisiana," to be given to New York City.

Please make checks payable to: LA State Firemen's Assoc., Post Office Box 1671, Gretna, LA 70054. This is a tax deductible contribution. Please reference on your check: TAX ID #72-0548383.



### PR\$ RECOVERY, INC.

Collections and  
Pre-employment Screening  
Assertive and Professional

(504) 897-9009

FAX (504) 897-0026

No contracts

No minimum



*NODA News* is published every month with the exception of June and August. Deadline for ads and editorial material is the 5th of the month preceding publication. Ads and news should be sent to Dr. Kristi Soileau, 2820 Napoleon Ave., Suite 470, New Orleans, LA 70115.

*NODA News* is a publication of the New Orleans Dental Assn., 2121 N. Causeway Blvd., Suite 153, Metairie, LA 70001. Phone (504) 834-6449.

#### WEB SITES

N.O. Dental Association  
[www.nodental.org](http://www.nodental.org)

N.O. Dental Conference  
[www.nodc.org](http://www.nodc.org)

#### WE WANT YOUR NEWS

Anyone knowing of any dentist who has made a significant contribution, gained an elective or appointive office, written an article, delivered a paper, or rendered unusual public service, please call or write Dr. Kristi Soileau, 2820 Napoleon Ave., Suite 470, New Orleans, LA 70115. Phone: 899-2255.



Placement Service  
Dental Hygienist-Dental Assistant-Front Desk  
Temporary/Permanent

### DENTAL AUXILIARY RESOURCES, INC.

Marilyn I. Bernard, R.D.H., B.S.  
"We Place to Please"

653 MELODY DRIVE  
METAIRIE, LA 70002

Pager 569-6508  
(504) 835-6174

# ADA establishes special American Tragedy Fund

## Changes noted in HIV epidemic in last eight years

Many changes have occurred in the HIV epidemic in the past eight years, writes Roseann Mulligan, DDS, in the *CDA* (California) *Journal*, February, 2001.

The demographic profile of the population most at risk for contracting the disease has been changing, she notes. An increasingly disproportionate number of African-Americans and Hispanics have contracted the disease, and an increased percentage of women have contracted the disease through heterosexual exposure.

Also changing is the knowledge of the virus, its mutability and its potential for oral transmission, the medical treatments and protocols for medications, and the intraoral manifestations being observed.

Mulligan notes that a 1993 *CDA Journal* article discussed only three anti-retroviral drugs used to diminish HIV replication. Today, three categories of anti-retroviral drugs, specifically combination therapies, are used as a prognosticator of HIV disease activity.

The article also notes that many of the common intraoral lesions discussed in 1993 are seen with considerably less frequency. HIV-

infected patients are living longer, Mulligan notes, and many are returning to regimens of receiving routine oral health care that might have been neglected in the past due to depleted personal financial and emotional resources.

Staying knowledgeable about the disease is vitally important for patients' overall well-being, including their oral health, she writes. The dentist may be the first health care practitioner to interact with an undiagnosed HIV-infected person, to learn of an HIV positive patient's lack of adherence to an ongoing drug regimen, or to realize that an HIV-positive person has dropped out of the health care system.

(From the ADA)

### STATEMENT FROM ADA PRESIDENT AFTER SEPT. 11 ATTACK

**"In the face of such overwhelming disregard for human life, may we all find comfort during the weeks and months ahead in being part of a profession that values human life and contributes daily to its betterment. On behalf of the members of the ADA, I want to voice our deepest sympathy to the victims of this unspeakable tragedy and offer whatever assistance the Association can provide."**

### PICTURE FROM THE PAST



Many dentists will remember the "whipping post" in the Loyola operative clinic. It terrified many students!

The ADA has established a special fund, the ADA American Tragedy Fund, for the dental community to help dentists, their families and other victims of the September 11 terrorist attacks.

Individual dentists, state and local dental societies, related dental groups, manufacturers and distributors, and others worldwide are welcome to contribute to the fund.

ADA executive director Dr. James B. Bramson said the ADA will work with the state and local dental societies in the New York and Washington areas to assess need on a case-by-case basis and to distribute funds appropriately.

"We don't know yet how many dentists suffered losses, but at the very least, many practices will be disrupted for some time," said Dr. Bramson, who added that funds not used to help dentists directly or provide dental care for injured victims would be contributed to the Red Cross.

Checks should be made payable to the ADA American Tragedy Fund and mailed to: Dr. James B. Bramson, executive director, American Dental Association, 211 East Chicago Ave., Chicago, IL 60611.

The new fund, expected to be short-lived, supplements two existing funds that provide grants and loans to dentists in need: the ADA Emergency Fund, Inc., and the ADA Endowment and Assistance Fund, Inc.

Source: [www.ADA.org](http://www.ADA.org), *Today's News*, September 17, 2001.



**M.I.E. SERVICES, INC.**

~ LICENSED ~

**MEDICAL GAS VERIFIER  
& INSPECTOR**

**CALL US FOR YOUR  
CENTRAL PIPING  
SYSTEM NEEDS**

**800-464-9261**

*Wealth Advisory Group*  
NODA Preferred Provider

**TED C. GILMAN, MBA**  
Certified IRA Distribution Specialist

3939 N. Causeway Blvd.  
Suite 100

Certified IRA Distribution Specialist Metairie, LA 70002  
Investment Advisor Representative Office: (504) 834-0072  
General Securities Broker Cell: (504) 236-3410

Securities offered through Multi-Financial Securities Corporation  
Member NASD, SIPC, Registered Investment Advisor

- Investments and Securities
- Professional Money Management
- Retirement Planning
- Tax and Estate Planning
- Pension Planning
- 401 K • Start-Up • Take-Over • Termination

**Look for our next  
event/seminar at year-end.**

## Well Done



THESE ARE THE FOLKS behind the recently completed 52nd annual New Orleans Dental Conference. Members of the Core Committee, they met each month for a year and then spent countless hours during the Conference to make sure everything went well. First

convention to be held in the city following the September 11 tragedy in New York, the Conference had crowded sessions (several sold out) and only three cancellations by exhibitors (one was taken up by another company). General chairman Dr. Bob Barsley is at far left.

## Many systemic diseases have oral manifestations

In the first ever report on oral health in America, the U.S. Surgeon General's report released in May 2000 alerted the public health community to the need to promote oral health, according to an article in *Alpha Omegan*, May 2001.

Authors D. Walter Cohen, DDS, Louis F. Rose, DDS, MD, and Laura Minsk, DMD, note that three major themes emerged from the report: 1) oral health means much more than healthy teeth, 2) oral health is integral to general health, and 3) oral health disparities exist in the American population.

They write that the burden of oral problems is extensive and may be particularly severe in vulnerable populations. The researchers say the report contains several conclusions.

- Many systemic diseases and conditions have oral manifestations that may be the initial sign of clinical disease and serve to inform clinicians and individuals of the need for further assessment.

- The oral cavity is a portal of entry and the site of disease for microbial infections that affect general health status.

The oral cavity and its functions can be adversely affected by many pharmaceuticals and other therapies commonly used in treating systemic conditions.

- People who are immunocompromised and hospitalized people are at greater risk for general morbidity due to oral infections.

- Individuals with diabetes are at greater risk for periodontal disease.
- Several studies have demonstrated an asso-

ciation between periodontal diseases and diabetes, cardiovascular disease, stroke and adverse pregnancy outcomes.

**QualityTrim**  
*Chair Refinishing*

Marko Marin

- We'll Make Your Old Dental Chair New
- We Recover Vinyl, Cloth or Leather
- Free Estimate

www.aqualitytrim.com  
email • makotrim@aol.com

2833 Virginia Avenue • Kenner, Louisiana 70062  
Off (504) 466-1904  
Cell 908-3595



TEMP

## STAFFMATE

DENTAL HYGIENIST  
DENTAL ASSISTANTS

1-866-637-3636

AFFORDABLE  
PAY AS YOU GO



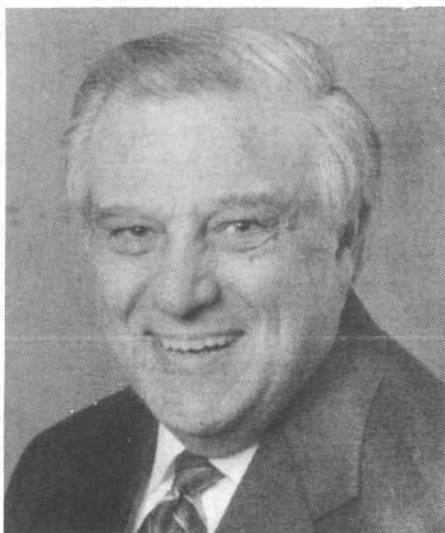
PERM

PRE-SCREENED  
PRE-QUALIFIED

## Dr. Liberto heads national CE Association

Dr. Vincent N. Liberto, director of continuing dental education at the LSU School of Dentistry, has been elected president of the Association for Continuing Dental Education.

An organization of continuing dental education providers, ACDE is affiliated with dental schools in the United States, Canada, and Puerto Rico. It has as its mission the advancement of the art and science of continuing dental education in order to improve the quality and quantity of education opportunities for dental professionals and thus to provide the best patient care possible.



DR. LIBERTO

Goals of ACDE are to provide leadership for all aspects of continuing dental education, to engage in activities that promote the professional growth and development of members, to promote research in continuing dental education, to develop appropriate services to support the needs of members and dental schools, to promote continued excellence in continuing dental education activities, and to respond to changes in oral health care delivery.

ACDE was founded in 1991 when two regional associations merged to provide a single forum for cooperation, collaboration, and mutual support among directors of university-based CDE programs.

Dr. Liberto is a past president of NODA and the LDA.

#### PRACTICE SALES:

VIDALIA AREA #6965 Gross \$499K/4 days;  
MARRERO ORTHO #6738 Gross \$150K/2 days.  
Call Dr. Earl Douglas, Professional Practice  
Consultants, Ltd., 800-321-4540.

#### ASSOCIATE POSITION:

LAKE CHARLES #6211. Call Dr. Earl Douglas,  
Professional Practice Consultants, Ltd., 800-  
321-4540.

## DEA CONSIDERING INTERNET PRESCRIPTIONS

The Drug Enforcement Administration (DEA) is drafting regulations to allow physicians, dentists and pharmacists to use the Internet to prescribe pain relievers and other controlled substances.

"DEA is currently working on a revision to regulations that will define the conditions under which prescribers may electronically sign and transmit to any retail, mail order or Internet pharmacy prescriptions for controlled substances," the agency said in a guidance document issued April 27, 2001.

The narcotics control agency said it is trying to determine the requirements for "secure electronic transmission for controlled substances between the practitioner and the pharmacy. These requirements will be subject to rulemaking, and you will have an opportunity to comment on them before they are finalized."

"At this time, DEA does not permit a prescription received via the Internet to be filled," the notice said.

Source: www.ADA.org, *Today's News*, May 4, 2001



## K & M Instructor Services



### Attention Dental Staff

*Do you have trouble finding a CPR Class when you need it? We offer CPR Classes.*

*On-Site and in the comfort of your Office or your Home. We work around your Busy Schedule. Count on US for Quality Training at a great Price. Save \$5.00 & Mention This Ad for NODA Discount.*

#### Courses Offered

- CPR - ALL LEVELS
- FIRST AID • Basic or Advanced
- OSHA • BloodBorne Pathogens

Office: 504-243-1750

Toll Free: 866-CPR-CLASS

Pager: 504-599-6225

Customer Quotes: Excellent Class,  
and I didn't have to leave my Office!

James Briggs, DDS  
Metairie, La.



Professional Practice  
Consultants, Ltd.

Member of



Specializing in Appraisals, Sales, Mergers,  
Associateships, and Pre-Sale Planning for Dentists

**Earl M. Douglas, DDS, MBA**

**Experience counts. It's as simple as that.**

800-321-4540

Call for information on our practice sale listings.

Visit our website at [www.ppcsouth.com](http://www.ppcsouth.com).

**BULLETIN BOARD**

**DENTAL OPERATORIES FOR SALE:** (2) Pelton & Crane Operatory Units (white, taupe) including: P&C Act II Dr's stools (2), P&C Act II Ass't stools (2), P&C Coachman Chairs (2), P&C ceiling mounted lights (2), P&C cabinets w/rear delivery units (left-handed) (2), also includes 5-drawer inserts tubs and racks; Porter MXR Nitrous Flowmeter & Rubber Goods (2), Kelcom Light Panels (2), Lumix 70 X-Ray Unit, P&C Amalgamators (2), Viewboxes (2). For more information, please call Dr. Stephanie Phillips at (504) 525-9990 or after hrs. call (504) 866-0420, (504) 450-0699.

(Classified ads are \$25 each. Send ads and checks to Dr. Kristi Soileau's office, 2820 Napoleon Ave., Suite 470, New Orleans, LA 70115.)



**Happy  
Thanksgiving**

**Continuing Education Corner**

*In an effort to keep you informed about available C.E. opportunities at the LSU School of Dentistry, this area will be devoted to informational updates.*

DATE	2001	COURSE / TITLE		TUITION
November 9-10		"Advanced Smile Design/Provisionals" 14 cr. hrs. w/Dr. Mike Malone	DDS	\$ 395.00
			Aux.	\$ 195.00
November 16		"An Update on Antibiotic Premedication 07 cr. hrs. & Clinical Pharmacology" w/Dr. Ann Eshenaur Sporlarich	DDS	\$ 195.00
			RDH	\$ 129.00
			Aux.	\$ 95.00
Nov. 25-Dec. 1		"Oral & Maxillofacial Surgery Review Course" w/Drs. Kent, Ghali, et alia	DDS	\$ 1495.00
			Resident	\$ 895.00
Nov. 30-Dec. 2		"Expanded Duty Dental Assistant" a/k/a "EDDA" w/Dottie Austin, CDA, EDDA 24 hrs.	Auxiliary	\$ 369.00
December 1		"Radiology for Dental Auxiliaries" 07 hrs. w/Drs. Thunthy & Hubar	Auxiliary	\$ 120.00
December 4		"Pharmacology Update/Conscious Sedation/Medical Emergencies in the Dental Office" w/Drs. Kirkendol, Winsauer, O'Brien	DDS	\$ 329.00
			RDS	\$ 249.00
			Auxiliary	\$ 195.00
December 7		"LAST CHANCE V: Esthetics-Putting The Pieces Together" 07 hrs. w/Drs. Burgess, Robbins, et alia	DDS	\$ 229.00
			RDH	\$ 149.00
			Auxiliary	\$ 95.00

Register by phone, fax, or on line.

Visa and MasterCard Accepted.

Please call (504) 619-8584 for further information.

Toll Free No. 1-800-488-2925 FAX: (504) 619-8776

Web Site: [www.lsusdce.org](http://www.lsusdce.org)

**TELL 'EM YOU  
SAW IT IN NODA NEWS**

When you patronize our advertisers – and we hope you will – tell them you saw their ad in *NODA News*.

These loyal friends help defray the costs of this monthly publication. ■

**NODA NEWS** accepts advertisements from a variety of sources, but makes no independent investigation or verification of any claim or statement contained in the advertisements. Inclusion of advertisements should not be interpreted as an endorsement by the New Orleans Dental Association or **NODA NEWS**.

David DeGenova, Associate Editor  
Kristi Soileau, Editor

Suite 153  
2121 N. Causeway Blvd.  
Metairie, LA 70001  
834-6449

**NODA NEWS**